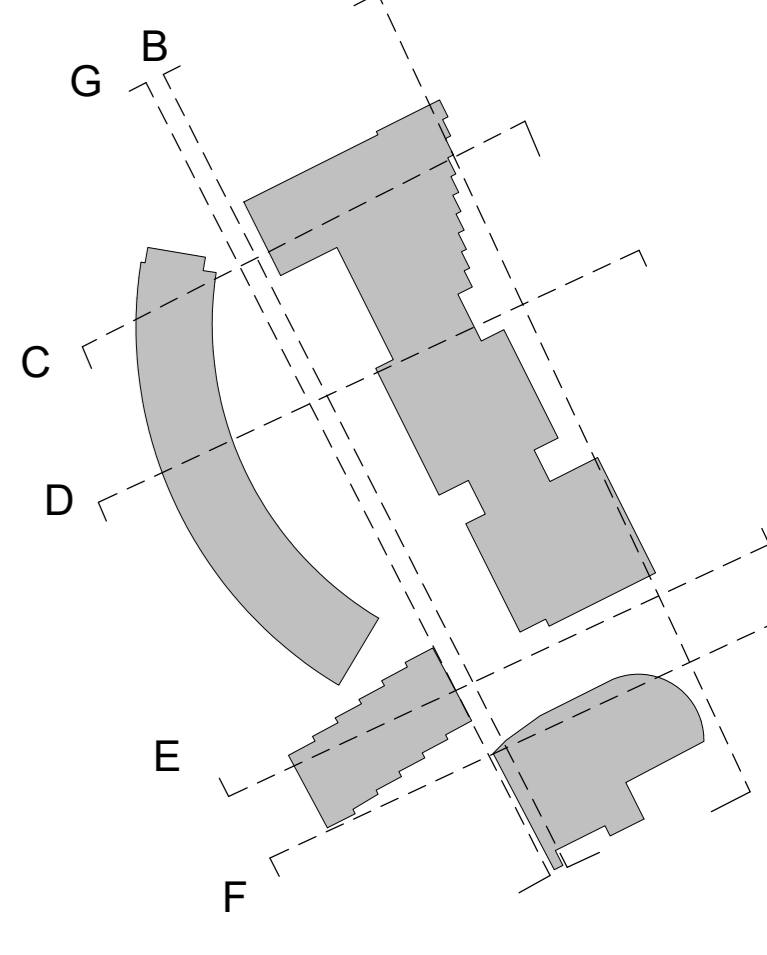


Do not scale from this document, unless for the purposes of planning applications where a scale bar is provided. Refer to 'Spatial dimensions only'. All dimensions to be verified on site prior to construction. Report all discrepancies in accordance to the Document Originator immediately. This document is to be read in conjunction with relevant documents, drawings and standards.

Key Plan

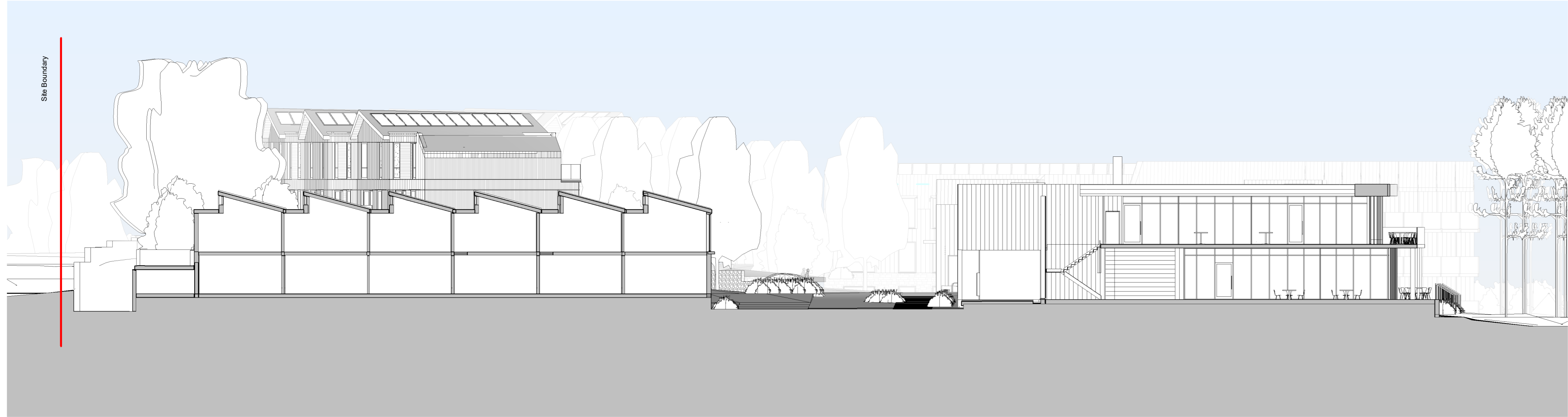


Key

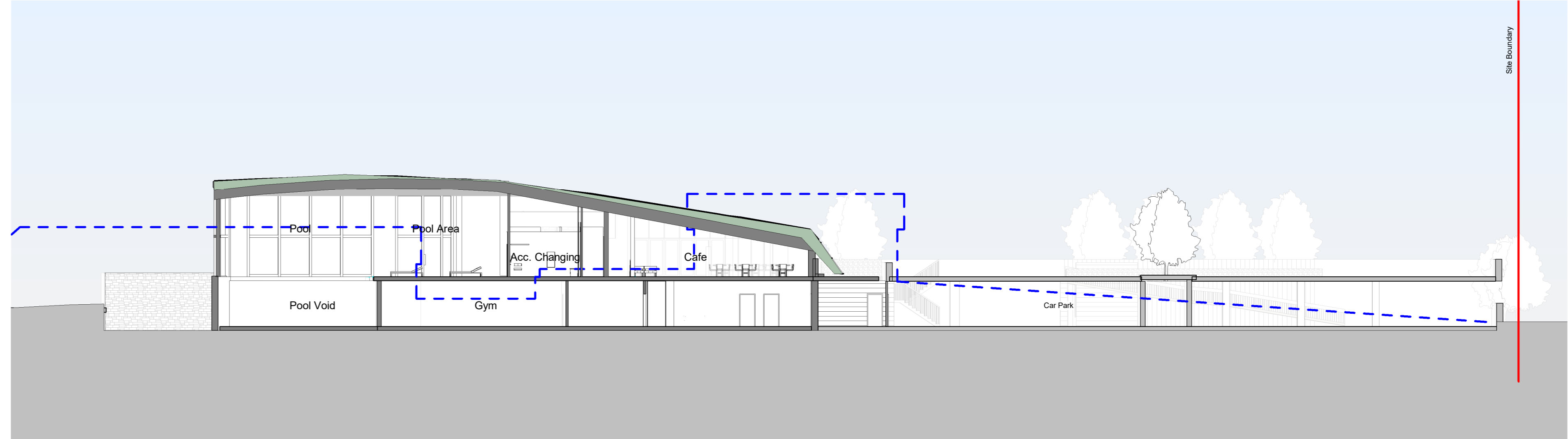
- Application boundary
- Existing elevation
- Approximate existing ground level

Proposed Materials

- 01 Curtain Wall Cladding - Anodised Bronze Toned Slat System with Exposed Vertical Mullions & Matching Doors
- 02 Timber Brise Soleil
- 03 Timber Cladding - Stringer
- 04 Timber Cladding - Vertical Alignment Tongue & Groove
- 05 Vertical Open Slatted Timber
- 06 Vertical Slatted Timber - Louvre Behind
- 07 Clear Glazed Frameless Balustrade
- 08 Stone Wall - Limestone Rubble Walling
- 09 Standing Green Natural Grey Zinc Roof
- 10 Dark Grey Aluminium Doors and Windows
- 11 Dark Grey Aluminium Louvres
- 12 Green Wall
- 13 PV Panels
- 14 Dark Grey Perforated Aluminium Slat Sluiter
- 15 Timber Sills
- 16 Mansard System
- 17 Etanaka Green Roof
- 18 Entrance Canopy - Pressed Grey Toned Aluminium
- 19 External Steel Staircase - Dark Grey
- 20 Dark Grey Render
- 21 FPC Grey Toned Aluminium Vertical Railing Balustrade
- 22 Grey stone pavers to balconies



Section EE
1 : 200



Section FF
1 : 200



Section GG
1 : 200

P04 13/07/23 Storey removed further to planning comments HR MAS

Rev	Date	Notes	Drn	CHK'd

SCALE 1:200



Document Originator
AWW
London 106 Watton Street, SE1 3QB 020 7160 0000
Plymouth East Quay House, PL4 3AG 01752 261 282
Bristol Jane + Mark, 49-52 Balmwin Street, BS1 1QB 0117 923 2535
RIBA Chartered Practice www.aww.com

Client
Kingfisher Resorts Studland Ltd

AWW Project Number 4561 Project Stage STAGE 2

Project Title
Knap House Studland

The
Extended Site Sections - sheet 2

Scale @ A0 Document Status
A0 PLANNING

Project	Origin	Version	Level	Type	Rev	Number	Rev
4561	AWW	SI	ZZ	DR	A	35001	P04